

2009

ILAE CENTENARY FILM FESTIVAL

winning entries

In 2008, the ILAE announced a competition for the ILAE Centenary Award for Film to encourage fresh perspectives on epilepsy and seizures in film. The judging criteria were creative and artistic excellence. The competition attracted entries from Europe, Asia, North and South America, Africa and the Middle East, representing many different film genres.

The winning entries and the commended shorts will all be shown during the conference.

Ictal (UK) *Overall winner – ILAE Centenary Award for Film*



This innovative short film depicts a seizure from the sufferer's viewpoint. The soundtrack was created by the filmmaker from EEG data recorded during a seizure, converted to sound.

WORLD PREMIERE SHOWING WITH DIRECTOR PRESENT

Year of the Wolf (Finland) *Winner – Best Feature Film*



A love story. An ominous darkness and the feeling of being hunted are used in this film to portray the ever present threat of seizures following a diagnosis of epilepsy. Water is also strong theme throughout the film, sometimes retreating, other times engulfing, representing the experience of seizures.

Rachel: A Perfect Life (Australia) *Winner – Best Documentary*



This feature-length documentary follows Rachel through as she contemplates and then undergoes a temporal lobe resection for her medically intractable epilepsy. In addition to an honest portrayal of an unexpectedly stormy postoperative period, the filmmakers used Rachel's T-shirt motifs to highlight the chapters of her recovery and the soundtrack to alert the view to the threat of a resumption of seizures following the surgery.

Commended Shorts

Stigma (Brazil)



Set against the background of ambiguous and provocative images, *Stigma* narrates the life of Machado de Assis (1839–1908), a writer with epilepsy, born into stark poverty in 19th-century Brazil.

A Better Waiting Room (Wales)



A black comedy that explores the ways in which epilepsy can, on occasion, work to someone's advantage.

Shaken (USA)



A dramatic, cultural exploration of the wider impact of epilepsy on family members.

Purchase NEW **ILAE BOOK**

INTERNATIONAL LEAGUE AGAINST EPILEPSY 1909-2009

A CENTENARY HISTORY

by S. Shorvon, G. Weiss, G. Avanzini, J. Engel, H. Meinardi,
S. Moshé, E. Reynolds, P. Wolf. (2009, Wiley-Blackwell)

**THE BOOK IS BEING PRODUCED IN A LIMITED EDITION
OF 1000 COPIES**

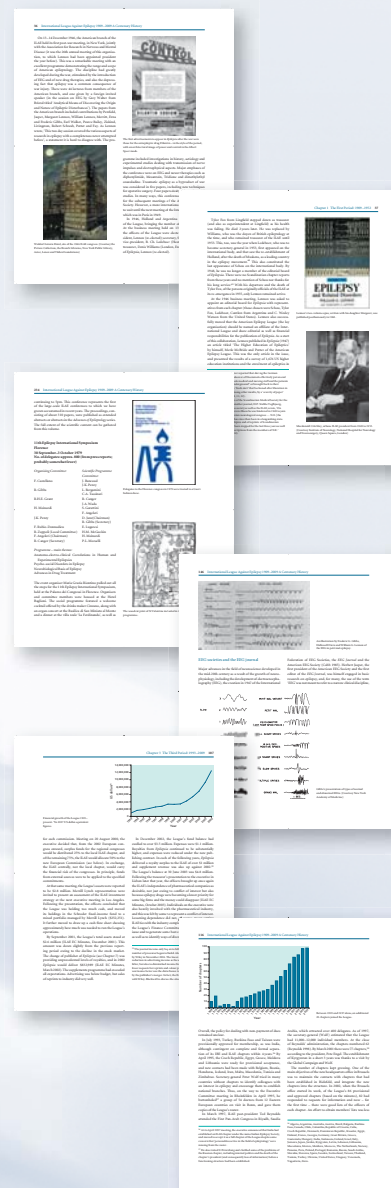
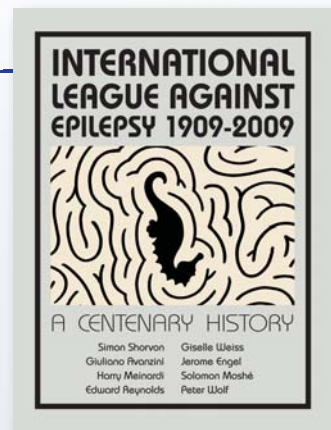
**PURCHASE YOUR INDIVIDUALLY NUMBERED AND NAMED
PRESENTATION COPY AT A SPECIAL CONFERENCE PRICE**

The ILAE is pleased to announce the publication of this book marking its centenary in 2009. This book charts the course of the history of the ILAE over its first hundred years, within the context of the history of neurology and medicine. The ILAE achieved much in its first century and the book attempts to be a scholarly work reflecting the quality of the ILAE. It includes much previously unpublished material deriving from in-depth research in the ILAE archives and interviews with individuals involved with the ILAE and many other historical sources around the world.

The volume includes the following chapters and appendices:

- ILAE – the first period 1909–1952
- ILAE – the second period 1953–1992
- ILAE – the third period 1993–2009
- Development of the classification and nosology of epilepsy 1909–2009
- Organisation of basic science in epilepsy with special reference to the ILAE
- The relations of the ILAE with the lay organisations
- Epilepsia – the journal of the ILAE
- ILAE – commissions, task forces and the Global Campaign Against Epilepsy
- ILAE – the international symposia and congresses 1909–2009
- Appendices – ILAE Chapters and dates of incorporation
 - ILAE Executive Committee membership
 - ILAE Commission membership
 - ILAE Constitution and bylaws
 - ILAE Ambassadors for epilepsy: 1968–present

The book is 338 pages, in full colour and with over 100 historical photographs and illustrations. Each copy is lavishly produced, beautifully presented with a book plate with an individual number and owner's name. It will be a valuable volume which will grace the library of epileptologists and bibliophiles.



SPECIAL CONFERENCE PRICE

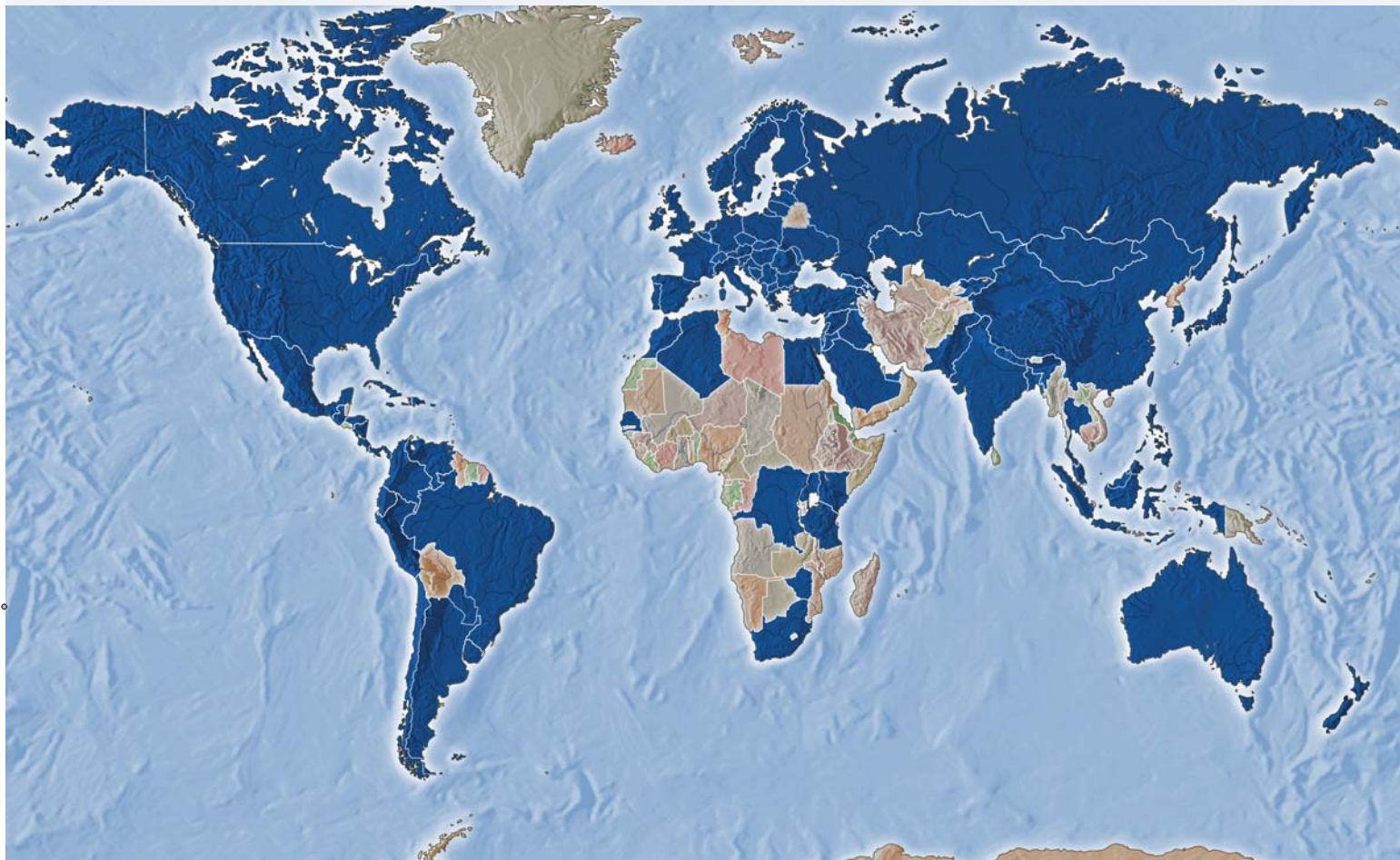
€65 or \$99

**PURCHASE AT THE ILAE
EXHIBITION BOOTH**

The sun never sets on the ILAE

ILAE membership around the world

Map of the world, with blue shading indicating ILAE membership



Albania		Costa Rica		Hong Kong		Macedonia		Poland		Tanzania	
Algeria		Croatia		Hungary		Malaysia		Portugal		Thailand	
Argentina		Cuba		India		Malta		Qatar		Tunisia	
Armenia		Cyprus		Indonesia		Mexico		Romania		Turkey	
Australia		Czech Republic		Iraq		Moldova		Russia		Uganda	
Austria		Denmark		Ireland		Mongolia		Saudia Arabia		United Kingdom	
Azerbaijan		Dominican Republic		Israel		Morocco		Senegal		Ukraine	
Bangladesh		Ecuador		Italy		Nepal		Singapore		United Arab Emirates	
Belgium		Egypt		Jamaica		Netherlands		Slovakia		Uruguay	
Brazil		Estonia		Japan		New Zealand		Slovenia		United States	
Bulgaria		Finland		Jordan		Nicaragua		South Africa		Venezuela	
Burkina Faso		France		Kazakhstan		Norway		South Korea		Yugoslav Union of Leagues Against Epilepsy	
Canada		Georgia		Kenya		Pakistan		Spain		Zimbabwe	
Chile		Germany		Kyrgyzstan		Panama		Sweden			
China		Greece		Latvia		Paraguay		Switzerland			
Colombia		Guatemala		Lebanon		Peru		Syria			
Congo		Honduras		Lithuania		Philippines		Taiwan			

ILAE INTERNATIONAL LEAGUE AGAINST EPILEPSY

JOIN THE INTERNATIONAL LEAGUE AGAINST
EPILEPSY – IN THIS ITS CENTENARY YEAR –
AND BE PART OF A WORLDWIDE MOVEMENT

It is hoped that all attendees to this the Centenary Conference of the ILAE will consider joining the organisation – as the strength of the organisation depends on its global membership. Information about application is available at this booth.

ILAE is the world's pre-eminent association of physicians and other health professionals working towards a world where no person's life is limited by epilepsy.

Epilepsy is a worldwide condition and the ILAE has a global reach. Epilepsy affects children and adults, complicates many other medical diseases, as well as occurring alone, and requires long-term treatment. It is a heavy burden for many patients, and the aim of the ILAE is:

- To advance and disseminate knowledge about epilepsy
- To promote research, education and training
- To improve services and care for patients, especially by prevention, diagnosis and treatment

The ILAE was founded in Budapest in 1909 and has become an important influence on epilepsy policy, research and treatment. It has been governed, since 1935, by an Executive Committee, with distinguished presidents and members – voted in each 4 years by the national chapters. The ILAE runs conferences on a national, regional and international basis. It owns and publishes the premier epilepsy journal *Epilepsia* and works to achieve its aims through its national chapters and its commissions and task forces. It is through the efforts of its members, all volunteers, that it achieves its goals.

If you are not a member already, please consider joining the organisation and contributing to the global effort to improve the lives of those with epilepsy.



William G Lennox
ILAE president 1935–1949



Macdonald Critchley
ILAE president 1949–1953



A Earl Walker
ILAE president 1953–1957



Francis L McNaughton
ILAE president 1961–1965



AM Lorentz de Haas
ILAE president 1965–1967



Jerome K Merlis
ILAE president 1967–1969



Henri Gastaut
ILAE president 1969–1973



David D Daly
ILAE president 1973–1977



J Kiffin Penry
ILAE president 1977–1981



Mogens Dam
ILAE president 1981–1985



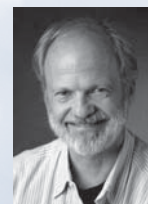
Fred E Dreifuss
ILAE president 1985–1989



Harry Meinardi
ILAE president 1989–1993



Edward H Reynolds
ILAE president 1993–1997



Jerome Engel Jr
ILAE president 1997–2001



Giuliano Avanzini
ILAE president 2001–2005



Peter Wolf
ILAE president 2005–2009



Solomon Moshé
ILAE president 2009